

Алматы (7273)495-231  
Ангарск (3955)60-70-56  
Архангельск (8182)63-90-72  
Астрахань (8512)99-46-04  
Барнаул (3852)73-04-60  
Белгород (4722)40-23-64  
Благовещенск (4162)22-76-07  
Брянск (4832)59-03-52  
Владивосток (423)249-28-31  
Владикавказ (8672)28-90-48  
Владимир (4922)49-43-18  
Волгоград (844)278-03-48  
Вологда (8172)26-41-59  
Воронеж (473)204-51-73  
Екатеринбург (343)384-55-89

Иваново (4932)77-34-06  
Ижевск (3412)26-03-58  
Иркутск (395)279-98-46  
Казань (843)206-01-48  
Калининград (4012)72-03-81  
Калуга (4842)92-23-67  
Кемерово (3842)65-04-62  
Киров (8332)68-02-04  
Коломна (4966)23-41-49  
Кострома (4942)77-07-48  
Краснодар (861)203-40-90  
Красноярск (391)204-63-61  
Курск (4712)77-13-04  
Липецк (4742)52-20-81

Магнитогорск (3519)55-03-13  
Москва (495)268-04-70  
Мурманск (8152)59-64-93  
Набережные Челны (8552)20-53-41  
Нижний Новгород (831)429-08-12  
Новокузнецк (3843)20-46-81  
Ноябрьск (3496)41-32-12  
Новосибирск (383)227-86-73  
Омск (3812)21-46-40  
Орел (4862)44-53-42  
Оренбург (3532)37-68-04  
Пенза (8412)22-31-16  
Петрозаводск (8142)55-98-37  
Псков (8112)59-10-37  
Пермь (342)205-81-47

Ростов-на-Дону (863)308-18-15  
Рязань (4912)46-61-64  
Самара (846)206-03-16  
Санкт-Петербург (812)309-46-40  
Саратов (845)249-38-78  
Севастополь (8692)22-31-93  
Саранск (8342)22-96-24  
Симферополь (3652)67-13-56  
Смоленск (4812)29-41-54  
Сочи (862)225-72-31  
Ставрополь (8652)20-65-13  
Сургут (3462)77-98-35  
Сыктывкар (8212)25-95-17  
Тамбов (4752)50-40-97  
Тверь (4822)63-31-35

Тольятти (8482)63-91-07  
Томск (3822)98-41-53  
Тула (4872)33-79-87  
Тюмень (3452)66-21-18  
Ульяновск (8422)24-23-59  
Улан-Уда (3012)59-97-51  
Уфа (347)229-48-12  
Хабаровск (4212)92-98-04  
Чебоксары (8352)28-53-07  
Челябинск (351)202-03-61  
Череповец (8202)49-02-64  
Чита (3022)38-34-83  
Якутск (4112)23-90-97  
Ярославль (4852)69-52-93

Россия +7(495)268-04-70

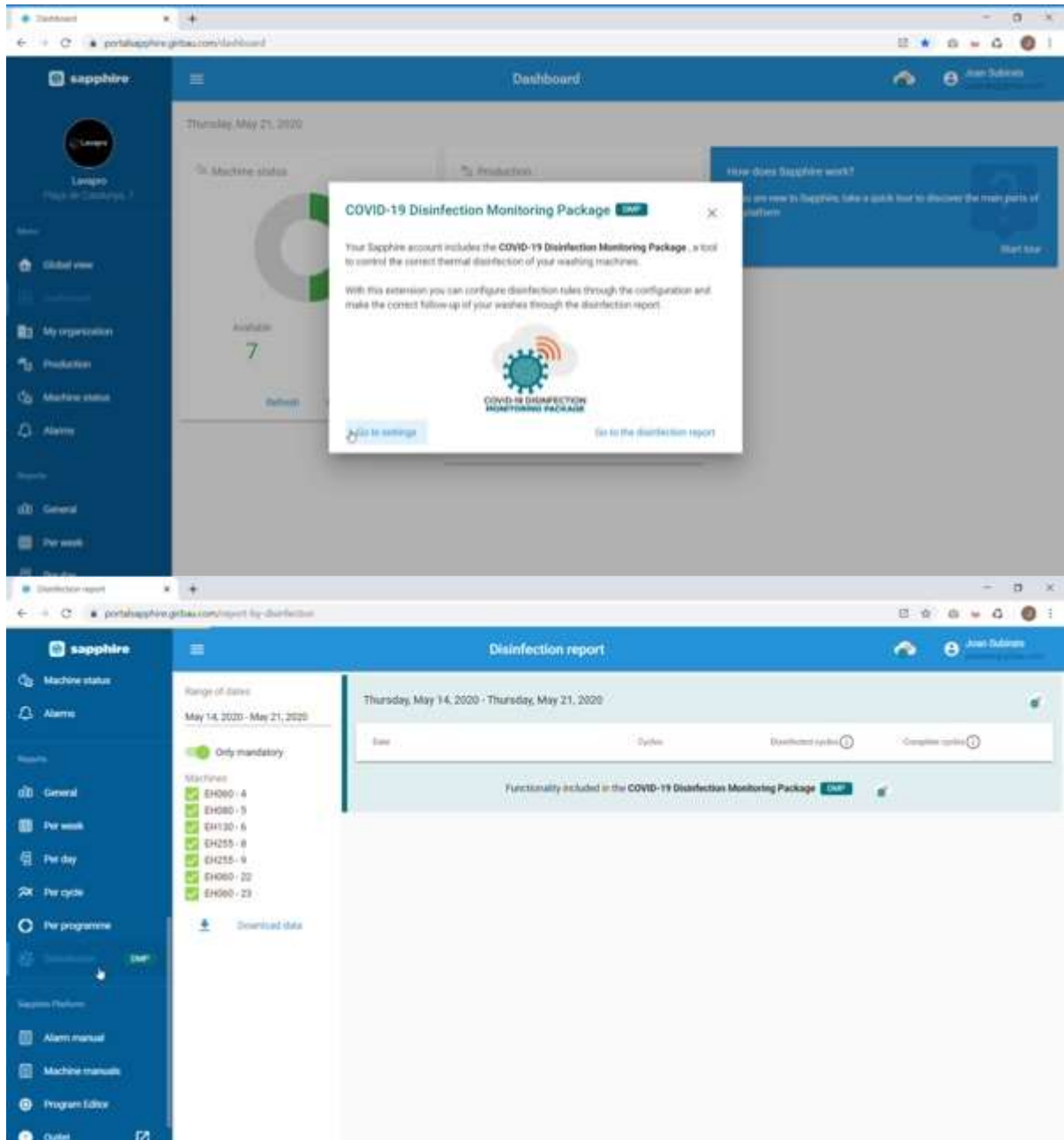
Казахстан +7(7172)727-132

Киргизия +996(312)96-26-47

<https://girbau.nt-rt.ru/> || [gua@nt-rt.ru](mailto:gua@nt-rt.ru)

# THE SOFTWARE DMP

DISINFECTION MONITORING PACKAGE is an extra module of Sapphire software that needs to be requested.



Setup - Disinfection rules

Disinfection rules

Disinfection rules are used to validate that a cycle of a machine subsequence is according to a temperature criteria for a continuous time.

- Default rule 1**: Disinfection condition of 10 minutes at 65 °C / 10 min, 300.2 °F. Enabled. Edit
- Default rule 2**: Disinfection condition of 3 minutes at 71 °C / 3 min, 159.8 °F. Enabled. Edit
- Default rule 3**: Disinfection condition of 1 minutes at 100.4 °C / 1 min, 199.4 °F. Enabled. Edit
- Covid Free**: Without description / 10 min, 140 °F. Disabled. Edit
- 10-75**: Ensure thermal disinfection for client 66 / 10 min, 167 °F. Enabled. Edit
- 10-50**: Ensure thermal disinfection for client 77 / 10 min, 122 °F. Enabled. Edit
- Cold**: Without description / 5 min, 69.8 °F. Enabled. Edit

+ New disinfection rule

Setup - Disinfection rules

Without description / 10 min, 140 °F. Disabled. Edit

Ensure thermal disinfection for client 66 / 10 min, 167 °F. Disabled. Edit

Ensure thermal disinfection for client 77 / 10 min, 122 °F. Disabled. Edit

**Cold**: Without description / 5 min, 69.8 °F. Enabled. Edit

+ New disinfection rule

Summary table

|        | All the programs | 2 | 7 | 8 | 16 | 17 | 27 | 32 | 37 | 34 | 44 | 77 |
|--------|------------------|---|---|---|----|----|----|----|----|----|----|----|
| EH00-4 | ●                |   |   |   |    |    |    |    |    |    |    |    |
| EH00-5 |                  |   | ● | ● |    |    |    |    |    |    |    |    |
| EH30-6 |                  |   |   |   | ●  | ●  | ●  | ●  | ●  |    |    |    |
| EH25-8 |                  |   |   |   |    |    |    |    |    | ●  | ●  | ●  |
| EH25-9 |                  |   | ● |   |    |    |    |    |    |    | ●  | ●  |

Functionality included in the COVID-19 Disinfection Monitoring Package. Edit

Disinfection report

Details of cycle

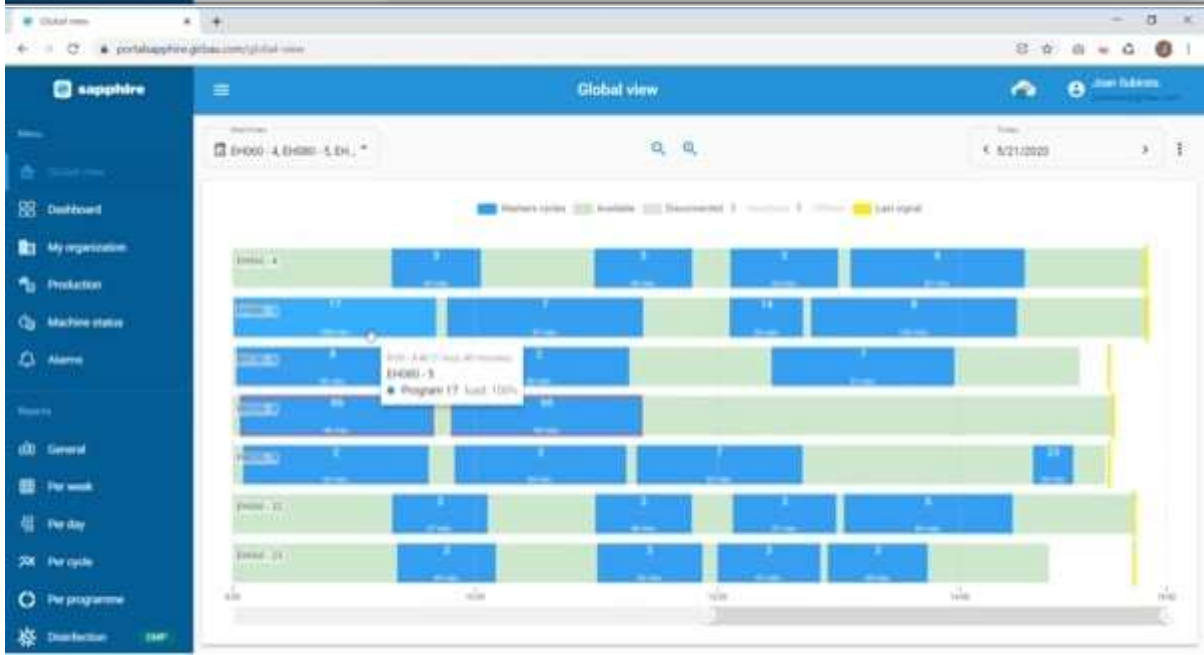
EH25-9 - Program 2: 8:20 - 8:29 (10 min)

8:40:07 h

- Bath temperature: 150.8
- Bath level: 0
- Default rule 1: 10 min - 300.2°F

10:50 h

Delete cycle | Do not count cycle | Close



**Setup - Machine phases**

Machine phases  
 This page shows the number of phases each program has on your machines.

| Machine   | 2 | 3 | 4 | 5 | 6 | 7 | 8 | 9 | 10 | 13 | 14 | 16 | 17 | 19 | 20 |
|-----------|---|---|---|---|---|---|---|---|----|----|----|----|----|----|----|
| E400 - 4  | 4 | 4 | 0 | 0 | 0 | 0 | 0 | 0 | 0  | 0  | 0  | 0  | 0  | 0  | 0  |
| E400 - 3  | 7 | 7 | 5 | 4 | 6 | 8 | 8 | 2 | 8  | 5  | 4  | 8  | 7  | 4  | 7  |
| E410 - 6  |   |   |   |   |   |   |   |   |    |    |    |    |    |    |    |
| E420 - 6  |   |   |   |   |   |   |   |   |    |    |    |    |    |    |    |
| E420 - 9  |   |   |   |   |   |   |   |   |    |    |    |    |    |    |    |
| E430 - 12 |   |   |   |   |   |   |   |   |    |    |    |    |    |    |    |

Functionality included in the COVID-19 Disinfection Monitoring Package

→

## THE REMOTE MANAGEMENT SOFTWARE

A single Sapphire Connectivity Box is enough to connect all the Girbau machines in your laundry. This device connects your laundry immediately to the Sapphire cloud where the information is processed. Using the Sapphire web platform you can monitor, control and configure your laundry.

- **Monitor:** View the status of your Girbau machines or read your production and consumptions in order to understand everything that happens in your business
- **Alarms:** Know in real-time when your business needs your immediate attention to reduce down time
- **Efficiency & Time Improvements:** Be more efficient and improve your timings by using Sapphire features in your day-to-day work
- **Improve Your Benefits & Reduce Your Costs:** Identify your weaknesses and solve them in order to improve your daily benefits and costs

**Алматы** (7273)495-231  
**Ангарск** (3955)60-70-56  
**Архангельск** (8182)63-90-72  
**Астрахань** (8512)99-46-04  
**Барнаул** (3852)73-04-60  
**Белгород** (4722)40-23-64  
**Благовещенск** (4162)22-76-07  
**Брянск** (4832)59-03-52  
**Владивосток** (423)249-28-31  
**Владикавказ** (8672)28-90-48  
**Владимир** (4922)49-43-18  
**Волгоград** (844)278-03-48  
**Вологда** (8172)26-41-59  
**Воронеж** (473)204-51-73  
**Екатеринбург** (343)384-55-89

**Иваново** (4932)77-34-06  
**Ижевск** (3412)26-03-58  
**Иркутск** (395)279-98-46  
**Казань** (843)206-01-48  
**Калининград** (4012)72-03-81  
**Калуга** (4842)92-23-67  
**Кемерово** (3842)65-04-62  
**Киров** (8332)68-02-04  
**Коломна** (4966)23-41-49  
**Кострома** (4942)77-07-48  
**Краснодар** (861)203-40-90  
**Красноярск** (391)204-63-61  
**Курск** (4712)77-13-04  
**Курган** (3522)50-90-47  
**Липецк** (4742)52-20-81

**Россия** +7(495)268-04-70

**Магнитогорск** (3519)55-03-13  
**Москва** (495)268-04-70  
**Мурманск** (8152)59-64-93  
**Набережные Челны** (8552)20-53-41  
**Нижний Новгород** (831)429-08-12  
**Новокузнецк** (3843)20-46-81  
**Ноябрьск** (3496)41-32-12  
**Новосибирск** (383)227-86-73  
**Омск** (3812)21-46-40  
**Орел** (4862)44-53-42  
**Оренбург** (3532)37-68-04  
**Пенза** (8412)22-31-16  
**Петрозаводск** (8142)55-98-37  
**Псков** (8112)59-10-37  
**Пермь** (342)205-81-47

**Казахстан** +7(7172)727-132

**Ростов-на-Дону** (863)308-18-15  
**Рязань** (4912)46-61-64  
**Самара** (846)206-03-16  
**Санкт-Петербург** (812)309-46-40  
**Саратов** (845)249-38-78  
**Севастополь** (8692)22-31-93  
**Саранск** (8342)22-96-24  
**Симферополь** (3652)67-13-56  
**Смоленск** (4812)29-41-54  
**Сочи** (862)225-72-31  
**Ставрополь** (8652)20-65-13  
**Сургут** (3462)77-98-35  
**Сыктывкар** (8212)25-95-17  
**Тамбов** (4752)50-40-97  
**Тверь** (4822)63-31-35

**Киргизия** +996(312)96-26-47

**Тольятти** (8482)63-91-07  
**Томск** (3822)98-41-53  
**Тула** (4872)33-79-87  
**Тюмень** (3452)66-21-18  
**Ульяновск** (8422)24-23-59  
**Улан-Удэ** (3012)59-97-51  
**Уфа** (347)229-48-12  
**Хабаровск** (4212)92-98-04  
**Чебоксары** (8352)28-53-07  
**Челябинск** (351)202-03-61  
**Череповец** (8202)49-02-64  
**Чита** (3022)38-34-83  
**Якутск** (4112)23-90-97  
**Ярославль** (4852)69-52-93

<https://girbau.nt-rt.ru/> || [gua@nt-rt.ru](mailto:gua@nt-rt.ru)